

THE NEW RADA V12 SHOWER ROBUST AND STYLISH WHATEVER THE ENVIRONMENT

Rada has introduced a brand new TMV3 shower valve to the range.

Rada V12 delivers outstanding performance, ergonomics, durability, and reliability. A versatile shower mixer created and approved for the most demanding environments. In addition to the technical attributes of the product, the V12 is already gaining many admirers due to its aesthetic. Contemporary and stylish are new words to be associated with TMV3 valves.

- Stylish contemporary design
- Built-in and surface mounted options
- Optional dual shower head diverter
- Safe-to-touch technology



The V10- the 'baby brother' of the V12- launched last year is also proving a winner, particularly in leisure and education applications.

It is the latest evolution in commercial sequential shower controls and has been engineered to perform flawlessly under the heaviest use. Small in scale, it minimises environmental impact while delivering maximum performance and reliability with contemporary styling.



Gummers Mix Valves

Each year 20 people die and almost 600 suffer serious burns from scalding bath water. The young, elderly and those with mobility problems are most at risk. The most effective way of ensuring safe hot water temperatures is to use a thermostatic mixing valve (TMV).

Current legislation in healthcare and education makes the use of TMV3 approved valves a must. Part G of the building regulations requires that water delivered to a bath is thermostatically controlled.

Sirrus has one of the largest ranges of TMV3 valves which comply with BS7942 and are BuildCert approved to NHS standard D08, meeting the demands of all application. Sirrus' mixing valves are suitable for 15, 22 and 28mm supplies. Designed to deliver safe, stable hot water at a pre-set temperature to single or multiple outlets, they are ideal for a wide range of installations where users may be at risk or where precise water temperature control is a prerequisite. Service isolation and inline plumbing can also be catered for.

The latest products in the range are all TMV2 and TMV3 approved and therefore Part G compliant and incorporate an automatic shut-off feature in the event of hot or cold water supply failure. New products include:



MT503CP-22 - A 15mm blending valve with 22mm Compression inlets. Suitable for high pressure bath fills, the MT503 CP-22 has 22mm inlets and 15mm outlet. Check valves and serviceable filters are supplied as standard.



IN403CP – A 15mm inline blending valve which is ideal for basins as it plumbs in line with standard pipework and will be easily hidden by a pedestal. It is also easy to service, thanks to the inclusion of check valves and serviceable filters.

IN403CP-ISO – As above, but with an isolation valve making it even easier to service.

Vitra S20

Following the huge success of the S50 range, Vitra are expanding the "S range" with the introduction of S20.

S20 series offers quality, durability and aesthetic value at affordable prices and provides practical and reliable solutions, with an extensive choice of products to suit any bathroom.



The range includes 5 basin sizes, peds and semi-peds, semi-recessed, undercounter and countertop basins, close coupled wc, back to wall wc and wall hung wc pans, plus a bidet.

Elegant designs combined with quality and competitive pricing offer the contracts market the ideal solution.

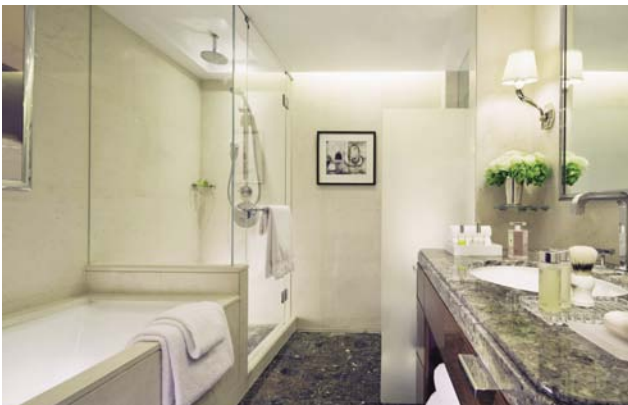


Four Seasons Hotel

Faucets has supplied the Hansgrohe Axor Citterio bathroom collection and also the Duravit sanitaryware and Kohler baths to all of the bathrooms of the newly refurbished Four Seasons Hotel at London's Park Lane.

We worked with Beck Interiors, ReardonSmith Architects and all the suppliers to ensure the clients wishes were met.

In a totally transformed 11-storey building, the new five-star hotel offers 192 luxury guest rooms, including 45 one-



two- and three-bedroom suites with airy views across fashionable Mayfair rooftops and the greenery of Hyde Park.



Grohe WRAS hoses

WRAS approved Non EPDM Hose Available from GROHE



In view of the NHS directive number DH (2010) 03, gateway 14265 dated the 24th May 2010 regarding the health concerns of using the material EPDM, Grohe has launched a new hose.

The new approved hose and its assembly connectors have a WRAS certificate number 109360 and do not use EPDM.

Technical Details:

- Length 1.5 metres
- 115219 single hose or 115220 for 10 pack
- Manufactured to GROHE GSO Standards
- **NOW available for delivery**

Grohe Low Pressure



June last year saw GROHE launch their first ever range of low pressure, deck mounted bath fillers, bath shower mixers and coordinated basin mixers. This long awaited collection incorporates key euro lines and features world renowned GROHE technologies. Lineare, Concetto, Eurodisc, Eurostyle and Eurosmart ranges now include low pressure solutions and more ranges are set to benefit. These additions ensure the Grohe portfolio is suitable for refurbishment projects where water pressure is an issue.

HEAD OFFICE
NORTHERN

Tel: (01495) 767600
Tel: (01925) 573000

Fax: (01495) 767601
Fax: (01925) 573001