

Purus Wetroom, Shower, Ensuite
& Bathroom Drainage Solutions
also featuring Plumbing Products & Stainless Steel Sanitaryware

PURUS

Purus now featured
on **bim**
object
www.purusgroup.com

HIGH QUALITY SWEDISH DESIGN

Drainage solutions to
suit all requirements

- from domestic wetrooms to
commercial and industrial projects

www.purusgroup.com



Purusline Living Wetroom Solution makes your bathroom design possibilities come alive

Wetrooms are the fastest growth area in the UK sanitary and bathroom sector.

Wetrooms already account for 10% market share in the UK Bathroom sector. This figure is rising rapidly with wetrooms being very much in demand by the younger and older generations as well as the disabled.

The Purusline Living Wetroom Solution allows quick and easy showering, with level access and low maintenance, creating an easy to install wetroom that is fashionable, functional and spacious.

www.purusgroup.com



Purusline Living

Make your bathroom design possibilities come alive! The Purusline Living is our flexible wetroom solution - choose from 2 lengths, 3 outlet types and 3 stainless steel grates, including the Tile Insert Grate and a choice of 2 patterns. The Purusline Living is BBA-Certified and all outlets come complete with our NOOD no-odour trap.

Purusline Living is available in lengths of 600mm and 800mm, with outlets available in Side, Side Side/Inline and Low - perfect for where there is limited space in the floor. All outlets are self-cleaning and the channels have built-in falls to ensure there is no dirt or odour build up. The Purusline Living opens up completely new opportunities for exciting designs in the bathroom.

Outlet gullies



Side outlet

Flow rate: 60-72 litres/minute
Total channel height: 137-141mm



Low outlet

Flow rate: 30-36 litres/minute
Total channel height: 93-97mm



Side side/inline outlet

Flow rate: 60-72 litres/minute
Total channel height: 140-144mm

Stainless steel grates



Twist grate

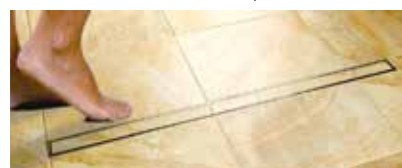


Drop grate



Tile Insert grate

The tile insert grate allows you to use the same tile in the grating as in the rest of the room, for a sleek, minimalistic look and a continuous tile design across the floor. Tiles up to 10mm are installed within the grate for a flush finish, ensuring that maintaining your stylish wetroom has never been simpler.



NOOD no-odour trap

The unique NOOD no-odour combined water and mechanical trap, which prevents any foul air escaping through the waste, is built into all Purusline Living gullies. A built-in spring mechanism ensures that the water trap always remains sealed, even if the trap is empty.



Product codes - Purusline Living 600

	Twist	Drop	Tile Insert
Side	52740	52772	52737
Side Side	52741	52773	52738
Low	52742	52774	52739

Product codes - Purusline Living 800

	Twist	Drop	Tile Insert
Side	52746	52775	52743
Side Side	52747	52776	52744
Low	52748	52777	52745

The complete Linear Wetroom Solution

Complete your Linear Wetroom with our Puragum Tanking Kit and, for joist installations, our Purusline Living Trays.

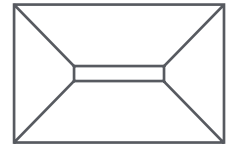
Purusline Living Trays - for Joist Installations

When installing into joist floors, the Purusline Living Tray, designed for use with the Purusline Living and the Puragum Tanking Kit, is the perfect solution for simple installation. The Tray is installed on top of your floorboards and has falls built in for the shower water to flow into the gully. It comes in two sizes to compliment the Purusline Living: 1400x920mm for the 600mm Channel; and 1600x920mm for the 800mm Channel. The Tray can be cut to size and scribed to the wall if desired.

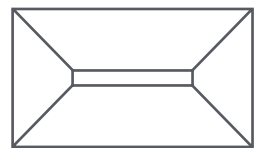
The thickness of the Tray is 18mm and can be used in conjunction with 18mm Marine Ply on floorboards. It comes in one piece for ease of installation with packers for 22mm floors.

The wall and floor joints are taped and sealed with the Puragum Tanking Kit giving your wetroom a threefold waterproofing process.

For concrete installations, a tray is not required and the falls can be built directly into the screed. Installation videos for both floor types are available to view at www.purusgroup.com



600mm Living
1400 x 920 x 18mm



800mm Living
1600 x 920 x 18mm

Puragum Tanking Kit

The Puragum Tanking Kit is designed to waterproof plasterboard, concrete and marine ply in your wetroom before tiling. The tanking kit is waterproof, not water resistant. The Puragum membrane is water based and the primer allows the Puragum to keep its elastic properties by not allowing it to dry out. The tapes are elastic and accommodate any movements of the wall/floor and corner joints. The Puragum is easy to tile upon as it gives a mechanical key.



Mini Series floor gullies

3 floor gullies with a choice of horizontal or vertical outlets for vinyl, tile and resin floor finishes

The Purus Minimax 50, Mini Brage 50 & Mini Brage 110 make up our range of BBA-Certified Mini Series floor gullies, suitable for vinyl, tiled and resin floors. With a grate diameter of 130mm, all come complete with a white grate, clamping ring, and a specially designed top-access water trap with NOOD no-odour function. The NOOD ensures that even if the drain dries out, no foul air or bad odours will come up because the spring-loaded trap keeps itself closed. The NOOD can be easily removed for cleaning and maintenance with a built-in handle.

The Mini Series floor gullies can all be used as an outlet without the NOOD water trap.

Mini Series floor gullies



Minimax 50
Product code: 7113764UK
Flow rate: 48l/m



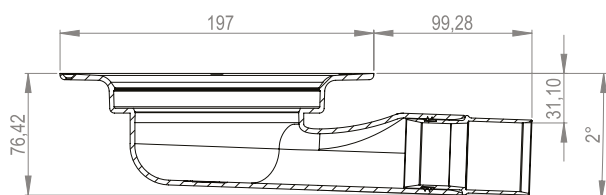
Mini Brage 50
Product code: 7113539UK
Flow rate: 48l/m



Mini Brage 110
Product code: 7113538UK-F
Flow rate: 48l/m

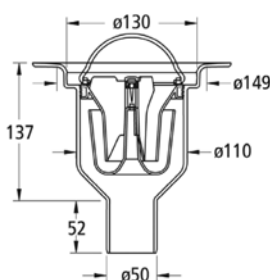
Minimax 50

The Purus Minimax 50 is our horizontal floor gully solution with an extra low profile: it has a total height of just 76mm including falls and the NOOD no-odour trap.



Mini Brage 50 & 110

The Purus Mini Brage 50 and Mini Brage 110 have vertical outlets in diameters of 50mm and 110mm respectively.



Accessories & spare parts



Purus Knife
Product code: 7113605



NOOD water trap
Product code: 7113605



Flexi-NOOD water trap
Product code: 7138414



Clamping ring
Product code: 7141316



50mm to 1 1/2 inch adapter
Product code: 52576

Grates & wetroom trays

A selection of stainless steel grates and wetroom trays are available for both vinyl and tile floor finishes to complement our Mini Series floor gullies.

PK155 & PK200 grates for tiled floors



Classic

155x155mm: 7138359
200x200mm: 7138377



Art Deco

155x155mm: 7138358
200x200mm: 7138374



Drop

155x155mm: 7138360
200x200mm: 7138376



Wave

155x155mm: 7138361
200x200mm: 7138375

Tile adapter grates for tile floors



Tile Insert

Product code: 52728



Twist

Product code: 52729



Platinum

Product code: 52730

Round grates for vinyl floors



Drop

Product code: 7138392



Wave

Product code: 7138394



Art Deco

Product code: 7138400

Maxxus trays

Load bearing up to 470kg

Maxxus trays have falls built into them for simple installation of our floor gullies into either joist or concrete floors. Suitable for vinyl and tiled floors.



7 sizes available
all trays have an outer depth of 22mm

1000x1000mm: P6821930
1135x770mm: P6821931
1300x800mm: P6821932
1500x800mm: P6821933
900x900mm: P6821934
1400x900mm: P6821935
1200x1200mm: P6821936



Floor gullies

Many additional floor gullies are also available from Purus, including those below and many more - please contact us for details.

Minimax Two Part

Designed for ease of installation into wetroom trays, the Minimax Two Part comes with the NOOD no-odour trap and can be installed into vinyl or tiled floors.

Product code: 52719



Mini Screed Buster - 59mm

Our brand new floor gully, the Mini Screed Buster, is our shallowest trapped gully yet with a depth of just **59mm**.

Coming very soon - product code TBC



Security gullies

Available with either an anti-ligature stainless steel or plastic grate, both for vinyl floors

Purus Security Gullies are ideal for situations where a lockable, secure drainage solution is required. A round stainless steel grate is available for high security needs and has anti ligature features built into it; whilst the round plastic grate is for areas where a less institutional appearance is desired but with a secure locked grate. A security gully suitable for resin floors is also available on request.

All security gullies come complete with a NOOD no-odour water trap; are made of self-cleaning Polypropylene (PP) and have a flow rate of 45 litres per minute.

Stainless steel grate with anti-ligature features



Side 50mm outlet
Product code: 52912
Total height: 115mm



Low 50mm outlet
Product code: 52874
Total height: 79mm



Bottom 110mm outlet
Product code: 52913
Total height: 196mm

Lockable plastic grate



Side 50mm outlet
Product code: 52911
Total height: 115mm



Low 50mm outlet
Product code: 52873
Total height: 79mm



Bottom 110mm outlet
Product code: 52914
Total height: 196mm

Special Purus Knife



for cutting vinyl floor to install security gullies
Product code: 3401103



Purus Project

The Purus Project is our range of premium stainless steel linear drainage channels for vinyl and tiled floors.

It is popular in commercial locations such as hotels, hospitals, spas and leisure centres due to its many excellent features. The channel is available in six different lengths from 300mm to 1000mm, and there are four outlets and four grate styles to choose from: three for tiled floors and one for vinyl. All channels come with height-adjusting screws to suit the thickness of tiles or vinyl you require; and the vinyl design also features a highly waterproof clamping frame.

The Purus Project can be installed into either joist or concrete flooring, with installation kits available for both solutions. All outlets come with a built-in NOOD no-odour trap, which ensures that even if the drain dries out, no foul air or bad odours will come up because the spring-loaded trap keeps itself closed. The NOOD can be easily removed for cleaning and maintenance with a built-in handle.



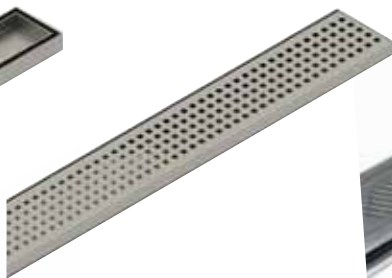
Stainless steel grates



Wave
for tiled floors



Tile Insert
for tiled floors



Chess
for tiled floors



Twist
for vinyl floors

Outlet gullies



Side outlet
Flow rate: 60-72 litres/minute
Total channel height: 142.5-147mm



Side side/inline outlet
Flow rate: 60-72 litres/minute
Total channel height: 147.5-152mm



Bottom outlet
Flow rate: 80-92 litres/minute



Side side/inline outlet
Flow rate: 30-36 litres/minute
Total channel height: 89.5-94mm

Purus Channel 100

Stainless steel channels up to 2.5m for industrial and commercial situations - a slim drainage gully with the high flow rate of wider channels

The Channel 100 is our best-selling stainless steel channel, with a width of just 100mm but a high flow capacity which equals that of wider channels. It is suitable for use in most environments, including industrial areas such as kitchens, healthcare facilities and laboratories, as well as pharmaceutical, breweries and food production areas.

The Channels can be equipped with high-load mesh gratings for heavy-duty industry use and are suitable for environments where hygiene is essential. The Channel 100 is also ideal for environments where interior design is central – for example: spas, hotels and bare-foot areas. Purus' designed patterned gratings for tiled, vinyl, concrete and resin floors are ideal for these situations. A bespoke service is available including channels in acid-resistant 316 stainless steel for swimming pools and industrial areas. Please contact Purus for more details.

Floor types



Vinyl floors



Resin floors



Tiled floors
available with clamping frame or
gluing flange



Concrete floors

Stainless steel grates



Mesh grate
L15 (up to 1,500kg)
M125 (up to 12,500kg)



Wave grate



Tile Insert grate
for tiles up to a height of
10mm



Chess grate
lockable stainless steel grate

Outlet positions



Central outlet

with no falls built in for a shallower channel depth.
Shown here with lockable stainless steel Chess grate



End outlet

with falls built in towards an outlet at one end.
Shown here with Tile Insert grate

Outlet gullies

All outlet gullies for the Channel 100 come with a water trap and a stainless steel filter bucket as standard.



**Side 75mm
Stainless steel**
Flow rate: 75l/min



**Bottom 110mm
Stainless steel**
Flow rate: 81l/min



**Bottom 75mm
Stainless steel**
Flow rate: 75l/min



**Side 50mm
Plastic**
Flow rate: 57l/min



**Side 75mm
Plastic**
Flow rate: 75l/min



**Bottom 75mm
Plastic**
Flow rate: 75l/min



**Low 50mm
Plastic**
Flow rate: 30l/min

Lengths

The Purus Channel 100 is available in a wide range of standard lengths, from 600mm up to 2.5 metres. Please see details of the full range below.

- 600mm
- 800mm
- 900mm
- 1000mm
- 1100mm
- 1200mm
- 1400mm
- 1500mm
- 2000mm
- 2500mm



Technical drawings, product codes and more at www.purusgroup.com. A full Channel 100 brochure is also available - please contact Purus to request your copy.

A full bespoke service is available on request. All channels can be manufactured in acid-resistant 316 stainless steel; and we are also able to cater for bespoke lengths, widths, grates, outlet positions and much more. Please contact Purus directly for further information.



Stainless steel channels

A wide range of stainless steel channels are available for commercial and industrial environments

As well as our popular Channel 100, we also offer other stainless steel channels to meet your specific requirements. The Channel 200 and Channel 300 are available in standard lengths up to 2.5m, and our Industrial, Laundry and Kitchen Channels are all also available in a range of dimensions. A bespoke service is also available including the option to manufacture in acid-resistant 316 stainless steel - please contact us for further details. All stainless steel channels are suitable for a range of floor types.

Channel 200

- channel width of 200mm
- suitable for concrete, vinyl, tiled and resin floors
- a wide range of lengths up to 2.5m



Channel 300

- channel width of 300mm
- suitable for concrete, vinyl, tiles and resin floors
- a wide range of lengths up to 2.5m



Square-Top Gullies

- suitable for concrete, vinyl, tiled and resin floors
- L15 mesh grate
- 200x200 or 300x300mm
- gullies available in 75mm or 110mm



Industrial Channels

- ideal for areas where high hygiene levels are not a priority - eg. in factories and garages
 - L15 mesh grate
- 300x300 or 500x300mm



Laundry Channels

- ideal for areas where high hygiene levels are not a priority - eg. in laundry areas and garages
- L15 mesh grate
- 300x300 or 500x300mm



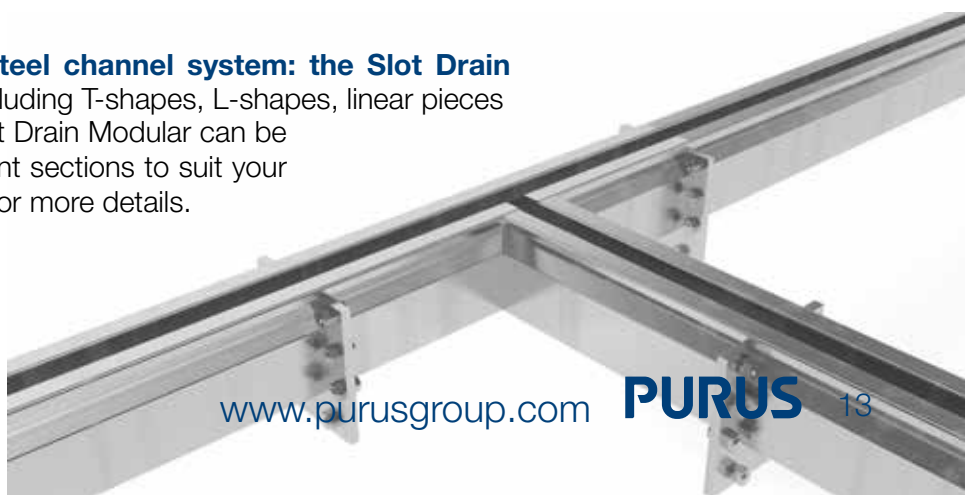
Kitchen Channels

- very high flow rates to facilitate use in kitchens and food preparation areas
 - L15 mesh grate
- 400x400, 600x400, 800x500 or 900x600mm



Slot Drain Modular

Introducing Purus' newest stainless steel channel system: the Slot Drain Modular. Made up of component parts including T-shapes, L-shapes, linear pieces and larger mesh drainage sections; the Slot Drain Modular can be connected and installed together as different sections to suit your exact requirements. Please contact Purus for more details.



PUM & Plumbing products

Basin/bidet waste with Purus Universal Membrane technology

Available in White and Chrome, the Purus Basin/Bidet Waterless Waste with revolutionary PUM – Purus Universal Membrane – technology, is a new low-level membrane which saves space without reducing the flow capacity, by replacing current S-traps and P-traps.



Basin/bidet waste with PUM, white
Product code: 53030



Basin/bidet waste with PUM, chrome
Product code: 53031

Pipe Connectors

Purus' range of 7 Pipe Connectors gives up to 60 connecting options for many different pipe sizes and materials.



Please visit www.purusgroup.com for sizes and product codes

Plumbing products



Basin/urinal waste with PUM, chrome
Product code: 8570241



Air admittance valves
Product code: 3131164



Basin/urinal waste with PUM, chrome
Product code: 8573425

Many more plumbing products, including waste traps with Purus Universal Membrane technology, pipe holders, air admittance valves and much more at www.purusgroup.com.

Stainless steel sanitaryware & interiors

Suitable for both domestic and public environments, our stainless steel sanitaryware is robust, durable and of high quality. The range of stainless steel toilets and urinals are practical for surroundings where there are tough requirements for durability and hygiene such as in public toilets, sports centres, restaurants and public institutions. Our stainless steel interiors range includes kitchen worktops, sinks, workbenches and more; all featuring premium style, function and quality. The full range is available to browse at www.purusgroup.com.



Stainless steel sanitaryware



V217 Basin
Product code: 820017



V301 Niagara Urinal trough
Lengths from 800mm to 3000mm



V130 WC
Product code: 7969018

Stainless steel interiors

Alongside our full Stainless Steel Interiors range of wall cabinets, workbenches, sinks and much more; we manufacture beautiful stainless steel Kitchen Worktops to meet your exact requirements. Manufactured in Sweden, the Kitchen Worktops can be designed in lengths up to 3400mm; and with a range of widths, depths, sink designs, shapes, rear details and corner details to choose from.

Please contact Purus to discuss your requirements, or alternatively, please visit www.purusgroup.com for more details and to view the Kitchen Worktops brochure.





Von Essen Hotel
Purus Project



Kedleston Park Golf Club
Purusline Living



Stoke City Football Club
Purus Project



The Wilton Centre Gym
Bespoke Channel 100



The Ridings High School
Mini Series floor gullies



Lord Street Care Home
Mini Series floor gullies

www.purusgroup.com

Product details, CAD & PDF drawings, BIMobjects and much more available on our brand new website

Purus Ltd.
Suite 6, Arena Park, Tarn Lane,
Scarcroft, Leeds LS17 9BF

Tel: +44 (0) 113 289 3172
+44 (0) 844 800 1651
Fax: +44 (0) 113 289 3778

info@purusgroup.com
www.purusgroup.com



PURUS

Our ongoing product development may entail changes in version, design and construction, and we reserve the right to make such changes.