

# PURUS

## Price Guide

Purus drainage solutions to suit all requirements - from domestic wetrooms to commercial and industrial projects

### **Purusline Living Linear Wetroom Solution**

### **Mini Series Floor Gully Wetroom Solution - for tiled and vinyl floors**

59mm S-Series floor gully, PUM, Purusline Living Plus, Purus Channel 100, Stainless steel channels & Stainless steel sanitaryware

Purus Limited offer a wide range of full wetroom drainage kit solutions as well as other items from many different product areas. Their Purusline Living drainage channels can be ordered as a complete linear kit for tiled floor finishes into either a joist or concrete floor build up; whilst their Mini Series floor gullies can be customised in a kit to include grates and accessories for both vinyl and tiled floors.

Purus now featured  
on **bim**  
**object**  
[www.purusgroup.com](http://www.purusgroup.com)

[www.purusgroup.com](http://www.purusgroup.com)



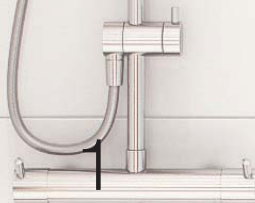
Tel: (01495) 767600 Fax: (01495) 767601 Email: [sales@faucets.co.uk](mailto:sales@faucets.co.uk)

Prices are excluding VAT

# Purusline Living Linear Wetroom Solution

Ordering a complete Purusline Living Linear  
wetroom kit is as easy as 1, 2, 3!

Just follow these steps:



Channel - choose your grate and outlet

All the options are detailed on the next page

2

Do you have floorboards?

If yes, you need a Centre Linear Former Tray. If not, proceed to 3

3

Order a Tanking Kit for every 8m<sup>2</sup>



**Make your bathroom design possibilities come alive!** The Purusline Living is Purus' flexible wetroom solution - choose from 2 lengths, 3 outlet types and 3 stainless steel grates, including the Tile Insert Grate and a choice of 2 patterns. The Purusline Living is BBA-Certified and all outlets come complete with our NOOD no-odour trap.

The Purusline Living is available in lengths of 600mm and 800mm, with outlets available in Side, Side Side/Inline and Low - perfect for where there is limited space in the floor. All outlets are self-cleaning and the channels have built-in falls to ensure there is no dirt or odour build up. The Purusline Living opens up completely new opportunities for exciting designs in the bathroom.

## Purusline Living Linear Wetroom Solution - Price Guide

### 1. Channel

Product Code	Description	Retail Price
52737	Purusline Living 600 with Side Outlet and Tile Insert Grate	£279.77
52740	Purusline Living 600 with Side Outlet and Twist Grate	£313.08
52772	Purusline Living 600 with Side Outlet and Drop Grate	£313.08
52739	Purusline Living 600 with Low Outlet and Tile Insert Grate	£279.77
52742	Purusline Living 600 with Low Outlet and Twist Grate	£313.08
52774	Purusline Living 600 with Low Outlet and Drop Grate	£313.08
52738	Purusline Living 600 with Side Side Outlet and Tile Insert Grate	£279.77
52741	Purusline Living 600 with Side Side Outlet and Twist Grate	£313.08
52773	Purusline Living 600 with Side Side Outlet and Drop Grate	£313.08
52743	Purusline Living 800 with Side Outlet and Tile Insert Grate	£313.08
52746	Purusline Living 800 with Side Outlet and Twist Grate	£346.38
52775	Purusline Living 800 with Side Outlet and Drop Grate	£346.38
52745	Purusline Living 800 with Low Outlet and Tile Insert Grate	£313.08
52748	Purusline Living 800 with Low Outlet and Twist Grate	£346.38
52777	Purusline Living 800 with Low Outlet and Drop Grate	£346.38
52744	Purusline Living 800 with Side Side Outlet and Tile Insert Grate	£313.08
52747	Purusline Living 800 with Side Side Outlet and Twist Grate	£346.38
52776	Purusline Living 800 with Side Side Outlet and Drop Grate	£346.38



**Drop grate**



**Twist grate**



**Tile Insert grate**



**Side outlet**

Flow rate: min. 60 litres/minute  
Total channel height: 137-141mm



**Low outlet**

Flow rate: min. 30 litres/minute  
Total channel height: 93-97mm



**Side side/inline outlet**

Flow rate: min. 60 litres/minute  
Total channel height: 140-144mm

**Complete your Linear Wetroom Solution with a Centre Linear Former Tray and a Tanking Kit.** If installing into joists, you will require either a 1400x920x18mm Centre Linear Former Tray for the Purusline Living 600; or a 1600x920x18mm Tray for the Purusline Living 800.

Whatever your floor type, you will also require a Puragum Tanking Kit for every 8m<sup>2</sup> that requires tanking in your wetroom.

### 2. Centre Linear Former Tray

Product Code	Description	Retail Price
PLCENT600	Purusline Living Centre Linear Tray 1400x920x18mm for the Purusline Living 600	£349.55
PLCENT800	Purusline Living Centre Linear Tray 1600x920x18mm for the Purusline Living 800	£398.59



### 3. Puragum Tanking Kit

Product Code	Description	Retail Price
PTK001	Puragum Tanking Kit for 8m <sup>2</sup>	£157.90



# Mini Series Floor Gully Wetroom Solution for Tiles

Ordering a complete Mini Series Floor Gully  
wetroom kit for tiles is as easy as 1, 2, 3!

Just follow these steps:

1

Gully - choose your floor gully

All the options are detailed on the next page

2

Grate - choose your stainless steel grate

3

Order a Tanking Kit for every 8m<sup>2</sup> and any  
extras

Former trays, the Purus Knife and other installation accessories are  
also available



The Purus Minimax 50, Mini Brage 50 & Mini Brage 110 make up Purus' range of BBA-Certified Mini Series floor gullies, suitable for vinyl, tiled and resin floors. With a grate diameter of 130mm, all come complete with a white grate, clamping ring, and a specially designed top-access water trap with NOOD no-odour function. The NOOD ensures that even if the drain dries out, no foul air or bad odours will come up because the spring-loaded trap keeps itself closed. The NOOD can be easily removed for cleaning and maintenance with a built-in handle.

The Mini Series floor gullies can all be used as an outlet without the NOOD water trap.

## Mini Series Floor Gullies for Tiles - Price Guide

### 1. Floor gully

Product Code	Description	Retail Price
7113764UK	Minimax 50 gully with NOOD trap, plastic grate, 50mm side outlet and 1½" adapter	£43.62
52719	Minimax Two Part gully with NOOD trap, plastic grate, 50mm side outlet and 1½" adapter	£54.88
7113539UK	Mini Brage 50 gully with Flexi-NOOD trap, plastic grate, 50mm vertical outlet and 1½" adapter	£48.33
7113538UK-F	Mini Brage 110 gully with Flexi-NOOD trap, plastic grate and 110mm vertical outlet	£50.41



**Minimax 50**  
Flow rate: 48 l/m  
Gully depth: 75mm



**Mini Brage 50**  
Flow rate: 48 l/m  
Gully depth: 189mm



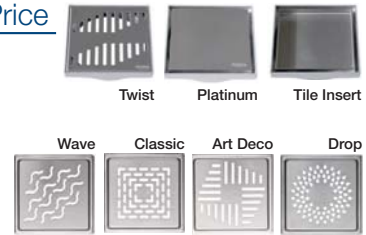
**Mini Brage 110**  
Flow rate: 48 l/m  
Gully depth: 100mm



**Minimax Two Part**  
Flow rate: 48 l/m  
Gully depth: 89mm

### 2. Stainless steel grate

Product Code	Description	Retail Price
7138354	PK150 stainless steel Standard grate	£30.65
52728	Tile adapter frame with stainless steel Tile Insert grate	£56.74
52729	Tile adapter frame with stainless steel Twist grate	£53.53
52730	Tile adapter frame with stainless steel Platinum grate	£101.57
7138358	PK155 stainless steel Art Deco grate	£51.13
7138359	PK155 stainless steel Classic grate	£51.13
7138360	PK155 stainless steel Drop grate	£51.13
7138361	PK155 stainless steel Wave grate	£51.13

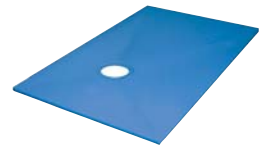


### 3. Puragum Tanking Kit

Product Code	Description	Retail Price
PTK001	Puragum Tanking Kit for 8m <sup>2</sup>	£157.90

### Self-Supporting Wetroom Former Trays

Product Code	Description	Retail Price
71010	1000x1000mm Self-Supporting Wetroom Former Tray, Off-Centre Outlet	£596.51
71107	1135x770mm Self-Supporting Wetroom Former Tray, Off-Centre Outlet	£596.51
71308	1300x800mm Self-Supporting Wetroom Former Tray, Off-Centre Outlet	£596.51
71508	1500x800mm Self-Supporting Wetroom Former Tray, Off-Centre Outlet	£596.51
700202C	1500x800mm Self-Supporting Wetroom Former Tray, Centre Outlet	£560.79
70909	900x900mm Self-Supporting Wetroom Former Tray, Off-Centre Outlet	£596.51
71409	1400x900mm Self-Supporting Wetroom Former Tray, Off-Centre Outlet	£596.51
700201C	1400x900mm Self-Supporting Wetroom Former Tray, Centre Outlet	£590.79
71808	1800x800mm Self-Supporting Wetroom Former Tray, Off-Centre Outlet	£805.29
71411	1450x1150mm Self-Supporting Wetroom Former Tray, Off-Centre Outlet	£617.82
71212	1200x1200mm Self-Supporting Wetroom Former Tray, Off-Centre Outlet	£617.82



### Extras

Product Code	Description	Retail Price
7113605	Purus Knife - installation tool for cutting membrane	£20.72
7133681	Purus Plate 130 for joist installation - alternative to trays	£13.18
7113765	NOOD water trap for Minimax 50 & Minimax Two Part	£20.62
7138414	Flexi-NOOD water trap for Mini Brage 50 & Mini Brage 110	£30.35
52576	50mm to 1½" ABS to solvent weld adapter	£3.06
70001	Square installation gasket, 400x400mm	£11.59
70004	Butyl self-adhesive square installation gasket, 400x400mm	£28.36



# Mini Series Floor Gully Wetroom Solution for Vinyl

Ordering a complete Mini Series Floor Gully  
wetroom kit for vinyl flooring is as easy as 1, 2, 3!

Just follow these steps:

1

Gully - choose your floor gully

All the options are detailed on the next page

2

Grate - choose your stainless steel grate

3

Order any extras

Former trays, the Purus Knife and other installation accessories are  
also available



The Purus Minimax 50, Mini Brage 50 & Mini Brage 110 make up Purus' range of BBA-Certified Mini Series floor gullies, suitable for vinyl, tiled and resin floors. With a grate diameter of 130mm, all come complete with a white grate, clamping ring, and a specially designed top-access water trap with NOOD no-odour function. The NOOD ensures that even if the drain dries out, no foul air or bad odours will come up because the spring-loaded trap keeps itself closed. The NOOD can be easily removed for cleaning and maintenance with a built-in handle.

The Mini Series floor gullies can all be used as an outlet without the NOOD water trap.

## Mini Series Floor Gullies for Vinyl - Price Guide

### 1. Floor gully

Product Code	Description	Retail Price
7113764UK	Minimax 50 gully with NOOD trap, plastic grate, 50mm side outlet and 1½" adapter	£43.62
52719	Minimax Two Part gully with NOOD trap, plastic grate, 50mm side outlet and 1½" adapter	£54.88
7113539UK	Mini Brage 50 gully with Flexi-NOOD trap, plastic grate, 50mm vertical outlet and 1½" adapter	£48.33
7113538UK-F	Mini Brage 110 gully with Flexi-NOOD trap, plastic grate and 110mm vertical outlet	£50.41



**Minimax 50**  
Flow rate: 48 l/m  
Gully depth: 75mm



**Mini Brage 50**  
Flow rate: 48 l/m  
Gully depth: 189mm



**Mini Brage 110**  
Flow rate: 48 l/m  
Gully depth: 100mm



**Minimax Two Part**  
Flow rate: 48 l/m  
Gully depth: 89mm

### 2. Stainless steel grate

Product Code	Description	Retail Price
7138394	Stainless steel round grate for vinyl floors, Wave, lockable when ordered with 7138426UK	£49.15
7138400	Stainless steel round grate for vinyl floors, Art Deco	£49.15
7138392	Stainless steel round grate for vinyl floors, Drop	£49.15



Wave



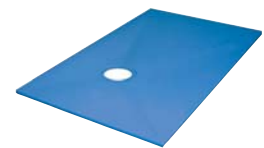
Art Deco



Drop

### 3. Self-Supporting Wetroom Former Trays

Product Code	Description	Retail Price
71010	1000x1000mm Self-Supporting Wetroom Former Tray, Off-Centre Outlet	£596.51
71107	1135x770mm Self-Supporting Wetroom Former Tray, Off-Centre Outlet	£596.51
71308	1300x800mm Self-Supporting Wetroom Former Tray, Off-Centre Outlet	£596.51
71508	1500x800mm Self-Supporting Wetroom Former Tray, Off-Centre Outlet	£596.51
700202C	1500x800mm Self-Supporting Wetroom Former Tray, Centre Outlet	£560.79
70909	900x900mm Self-Supporting Wetroom Former Tray, Off-Centre Outlet	£596.51
71409	1400x900mm Self-Supporting Wetroom Former Tray, Off-Centre Outlet	£596.51
700201C	1400x900mm Self-Supporting Wetroom Former Tray, Centre Outlet	£590.79
71808	1800x800mm Self-Supporting Wetroom Former Tray, Off-Centre Outlet	£805.29
71411	1450x1150mm Self-Supporting Wetroom Former Tray, Off-Centre Outlet	£617.82
71212	1200x1200mm Self-Supporting Wetroom Former Tray, Off-Centre Outlet	£617.82



### Extras

Product Code	Description	Retail Price
7113605	Purus Knife - installation tool for cutting vinyl flooring	£20.72
7133681	Purus Plate 130 for joist installation - alternative to trays	£13.18
7113765	NOOD water trap for Minimax 50 & Minimax Two Part	£20.62
7138414	Flexi-NOOD water trap for Mini Brage 50 & Mini Brage 110	£30.35
52576	50mm to 1½" ABS to solvent weld adapter	£3.06
7141316	Clamping ring 130mm	£11.37
7138447	Plastic Art Deco grate	£6.73
7138417	Locking nuts for plastic grate	£10.75
7138426UK	Locking nuts and installation bracket for 7138394 Wave grate	£17.04

Purus Knife



# Minimax 59mm S-Series

By increasing the width and changing the clamping ring of the **Minimax 50**, Purus have been able to create their brand new Minimax S-Series floor gully with an even shallower depth of just **59mm**. Stainless steel grates for the Minimax 59mm S-Series are available for both tiled and vinyl floors.



PK200 Grates for tiled floors



Classic



Art Deco



Drop



Wave

Drop grate for vinyl floors, including Torx screws



Grate with Security Torx screws also available - please ask for details

## Installation accessories



Minimax S-Series 59mm Support

Product Code	Description	Retail Price
7110406UK	59mm S-Series floor gully inc. NOOD and adapter	£56.58
7138374	PK200 stainless steel Art Deco grate	£82.14
7138377	PK200 stainless steel Classic grate	£82.14
7138376	PK200 stainless steel Drop grate	£82.14
7138375	PK200 stainless steel Wave grate	£82.14
7129507	Drop grate for Vinyl floors for 59mm S-Series gully	£49.14
7129497	59mm S-Series floor gully Support for installation	£17.65

# Mini Oden 50

The **Mini Oden 50** is suitable for tiled, vinyl and resin floors and comes complete with a white plastic grate for vinyl, a clamping ring and a specially designed top-access water trap, the Flex Neptun. All stainless steel grates compatible with Purus' Mini Series floor gullies are suitable for use with the Mini Oden 50.



**Mini Oden 50**

Product code: 7113535UK  
Price: £39.92



# Purusline Living Plus<sup>+</sup>

The Purusline Living Plus for Vinyl is Purus' newest linear drainage solution in lengths of 600mm and 800mm. With a patterned Chess grate in stainless steel and a drain body in PP plastic, the Purusline Living Plus has many similarities to the popular Purusline Living, but has been redesigned with a new clamping ring system to be suitable for vinyl flooring. It makes a great alternative to our Mini Series floor gullies where a linear finish is preferred, and is therefore popular in care homes, domestic properties and hospitals as well as hotels, spas and leisure centres. The Purusline Living Plus channels are available in Side, Low and Side Side outlet configurations.

The Purusline Living Plus can be installed into either joist or concrete flooring, with a Self-Supporting Tray used when installing into joists. All outlets come with a built-in NOOD no-odour trap, which ensures that even if the drain dries out, no foul air or bad odours will come up because the spring-loaded trap keeps itself closed. The NOOD can be easily removed for cleaning and maintenance with a built-in handle.

## Purusline Living Plus 600 & 800 for Vinyl

Product Code	Description	Retail Price
53303	Purusline Living Plus 600 for Vinyl, Side 50mm Outlet and Stainless Steel Grate	£557.63
53315	Purusline Living Plus 800 for Vinyl, Side 50mm Outlet and Stainless Steel Grate	£656.93
53304	Purusline Living Plus 600 for Vinyl, Low 50mm Outlet and Stainless Steel Grate	£557.63
53316	Purusline Living Plus 800 for Vinyl, Low 50mm Outlet and Stainless Steel Grate	£656.93
53305	Purusline Living Plus 600 for Vinyl, Side Side 50mm Outlet and Stainless Steel Grate	£557.63
53317	Purusline Living Plus 800 for Vinyl, Side Side 50mm Outlet and Stainless Steel Grate	£656.93

## Purusline Living Plus for Vinyl - outlet gully options

All channels include NOOD water trap, installation kit and 50mm to 1½" adapter for solvent weld

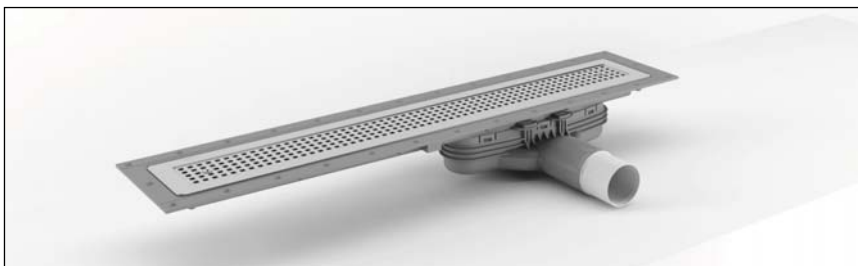


### Purusline Living Plus for Vinyl with Side outlet

Flow rate: 60-72 litres/minute  
Total channel height: 124-126mm

#### Product Codes

600mm: 53303  
800mm: 53315



### Purusline Living Plus for Vinyl with Low outlet

Flow rate: 30-36 litres/minute  
Total channel height: 73mm

#### Product Codes

600mm: 53304  
800mm: 53316



### Purusline Living Plus for Vinyl with Side Side outlet

Flow rate: 60-72 litres/minute  
Total channel height: 126mm

#### Product Codes

600mm: 53305  
800mm: 53317

# Stainless steel floor gullies

Alongside Purus' Mini Series floor gullies, they also manufacture a wide range of special floor gullies in both stainless steel and plastic. These gullies vary in material, grate dimension and outlet configuration and can be ordered as special items. A selection is shown below and many more are available to view online. All prices for the stainless steel floor gullies are on request.



**Balder 50 R**  
Prod. code: 7118089  
Diameter: 150mm  
Outlet: Vertical 50mm



**Rens 110 R**  
Prod. code: 7060701  
Diameter: 150mm  
Outlet: Vertical 110mm



**Bigg 110 R**  
Prod. code: 7102835  
Diameter: 220mm  
Outlet: Side 110mm



**Heavy 110 R**  
Prod. code: 7102837  
Diameter: 220mm  
Outlet: Vertical 110mm

## Purus Universal Membrane

The Purus Basin/Bidet Waterless Waste with revolutionary PUM - Purus Universal Membrane - technology is a new low-level membrane which saves space without reducing the flow capacity, by replacing current S-traps and P-traps.

### Purus Universal Membrane - Basin/bidet waste



**Basin/bidet waste with PUM, white**  
Product code: 53030  
Price: £24.87



Purus Channel 100

# Purus Channel 100

**The Channel 100 is our most popular stainless steel channel drainage system** and is an ideal solution for shower areas, changing rooms and hotel and leisure facilities; as well as industrial areas such as factories and breweries. It is designed for installation into concrete floors with vinyl, tiled, resin or concrete finishes and comes in standard lengths up to 2.5m.

Many different configurations are available as standard - you have a choice of four grate types plus the Tile Insert grate if installing into a tiled floor finish; and the outlet can be positioned in the centre or the end of the channel. The Chess and Wave patterned stainless steel grates are ideal for bare-foot areas whilst the L15 and M125 load-bearing mesh grates are designed to suit heavy-duty industrial use.

**An extensive bespoke service is available for channels to be manufactured to your requirements. The Channel 100 can be made in lengths of up to 6 metres and in acid-resistant 316 stainless steel - please contact Purus for more details.**

For Purus' standard channels, select these details to give you your code and price...

## 1. Select your floor type



Vinyl floors



Resin floors



Tiled floors  
available with clamping frame or  
gluing flange



Concrete floors

## 2. Select your length

- 600mm
- 900mm
- 1100mm
- 1400mm
- 2000mm
- 800mm
- 1000mm
- 1200mm
- 1500mm
- 2500mm

## 3. Select your grate



Mesh grate  
L15 (up to 1,500kg)  
M125 (up to 12,500kg)



Wave grate



Tile Insert grate  
for tiles up to a height of  
10mm



Chess grate  
lockable stainless steel grate

## 4. Select your outlet position



Central outlet

with no falls built in for a shallower channel depth.  
Shown here with a stainless steel Chess grate



End outlet

with falls built in towards an outlet at one end.  
Shown here with a Tile Insert grate

## Purus Channel 100 - sample price guide

Prices for all variants of the Channel 100 are available on request

### Vinyl flooring

Product Code	Description	Retail Price
PR121060CM	Channel 100x600mm for Vinyl, Stainless steel Chess grate, Central outlet	£993.63
PR121100WG	Channel 100x1000mm for Vinyl, Stainless steel Wave grate, End outlet	£1,080.71
PR121120GM	Channel 100x1200mm for Vinyl, Stainless steel L15 mesh grate, Central outlet	£1,241.22
PR121150MG	Channel 100x1500mm for Vinyl, Stainless steel M125 mesh grate, End outlet	£1,626.92
PR121200GM	Channel 100x2000mm for Vinyl, Stainless steel L15 mesh grate, Central outlet	£1,605.01
PR121250CG	Channel 100x2500mm for Vinyl, Stainless steel Chess grate, End outlet	£1,529.11

### Resin flooring

Product Code	Description	Retail Price
PR151060CM	Channel 100x600mm for Resin, Stainless steel Chess grate, Central outlet	£769.07
PR151100WG	Channel 100x1000mm for Resin, Stainless steel Wave grate, End outlet	£821.94
PR151120GM	Channel 100x1200mm for Resin, Stainless steel L15 mesh grate, Central outlet	£1,017.71
PR151150MG	Channel 100x1500mm for Resin, Stainless steel M125 mesh grate, End outlet	£1,331.48
PR151200GM	Channel 100x2000mm for Resin, Stainless steel L15 mesh grate, Central outlet	£1,251.68
PR151250CG	Channel 100x2500mm for Resin, Stainless steel Chess grate, End outlet	£1,199.11

### Tiled flooring with clamping frame

Product Code	Description	Retail Price
PR171060TM	Channel 100x600mm for Tiles with clamping frame, Stainless steel Tile Insert grate, Central outlet	£981.01
PR131100WG	Channel 100x1000mm for Tiles with clamping frame, Stainless steel Wave grate, End outlet	£1,256.64
PR131120GM	Channel 100x1200mm for Tiles with clamping frame, Stainless steel L15 mesh grate, Central outlet	£1,499.03
PR131150MG	Channel 100x1500mm for Tiles with clamping frame, Stainless steel M125 mesh grate, End outlet	£1,818.49
PR171200TM	Channel 100x2000mm for Tiles with clamping frame, Stainless steel Tile Insert grate, Central outlet	£1,432.31
PR131250CG	Channel 100x2500mm for Tiles with clamping frame, Stainless steel Chess grate, End outlet	£1,741.10

### Tiled flooring with gluing flange

Product Code	Description	Retail Price
PR161060TM	Channel 100x600mm for Tiles with gluing flange, Stainless steel Tile Insert grate, Central outlet	£882.66
PR141100WG	Channel 100x1000mm for Tiles with gluing flange, Stainless steel Wave grate, End outlet	£958.03
PR141120GM	Channel 100x1200mm for Tiles with gluing flange, Stainless steel L15 mesh grate, Central outlet	£1,177.88
PR141150MG	Channel 100x1500mm for Tiles with gluing flange, Stainless steel M125 mesh grate, End outlet	£1,550.41
PR161200TM	Channel 100x2000mm for Tiles with gluing flange, Stainless steel Tile Insert grate, Central outlet	£1,214.00
PR141250CG	Channel 100x2500mm for Tiles with gluing flange, Stainless steel Chess grate, End outlet	£1,383.07

### Concrete flooring

Product Code	Description	Retail Price
PR111060CM	Channel 100x600mm for Concrete, Stainless steel Chess grate, Central outlet	£776.46
PR111100WG	Channel 100x1000mm for Concrete, Stainless steel Wave grate, End outlet	£846.14
PR111120GM	Channel 100x1200mm for Concrete, Stainless steel L15 mesh grate, Central outlet	£1,024.51
PR111150MG	Channel 100x1500mm for Concrete, Stainless steel M125 mesh grate, End outlet	£1,321.42
PR111200GM	Channel 100x2000mm for Concrete, Stainless steel L15 mesh grate, Central outlet	£1,296.18
PR111250CG	Channel 100x2500mm for Concrete, Stainless steel Chess grate, End outlet	£1,168.95

### Gullies

Please select one outlet gully for use with your Channel 100



**Side 50mm Plastic**  
Code: PR855639V  
Flow rate: 57l/min  
Price: £28.53



**Side 75mm Plastic**  
Code: PR855538V  
Flow rate: 75l/min  
Price: £24.96



**Bottom 75mm Plastic**  
Code: PR855539V  
Flow rate: 75l/min  
Price: £24.96



**Low 50mm Plastic**  
Code: PR855640V  
Flow rate: 30l/min  
Price: £28.53



**Side 75mm Stainless steel**  
Code: PR855534V  
Flow rate: 75l/min  
Price: £206.89



**Bottom 110mm Stainless steel**  
Code: PR855536V  
Flow rate: 81l/min  
Price: £143.68



**Bottom 75mm Stainless steel**  
Code: PR855535V  
Flow rate: 75l/min  
Price: £182.69

# Stainless steel channels

As well as Purus' popular Channel 100, they also offer other stainless steel channels to meet your specific requirements. The Channel 200 and Channel 300 are available in standard lengths up to 2.5m, and their Industrial, Laundry and Kitchen Channels are all also available in a range of dimensions. A bespoke service is also available including the option to manufacture in acid-resistant 316 stainless steel - please contact Purus for further details. All stainless steel channels are suitable for a range of floor types.

Prices for all channels listed are available on request

## Purus Channel 200

- channel width of 200mm
- suitable for concrete, vinyl, tiled and resin floors
- a wide range of lengths up to 2.5m as standard



## Purus Channel 300

- channel width of 300mm
- suitable for concrete, vinyl, tiled and resin floors
- a wide range of lengths up to 2.5m as standard



## Square-Top Gullies

- suitable for concrete, vinyl, tiled and resin floors
- L15 mesh grate as standard (others also available)
- 200x200mm or 300x300mm
- gullies available in 75mm or 110mm



## Industrial & Laundry Channels

- ideal for areas where high hygiene levels are not a priority - e.g. in factories, garages and laundry areas
- L15 mesh grate as standard (others also available)
- 300x300mm or 500x300mm



## Kitchen Channels

- very high flow rates to facilitate use in kitchens and for food preparation
- L15 mesh grate as standard (others also available)
- 400x400mm, 600x400mm, 800x500mm or 900x600mm



# Stainless steel sanitaryware

**Suitable for both domestic and public environments, Purus' stainless steel sanitaryware is robust, durable and of high quality.** The range of stainless steel toilets and urinals are practical for surroundings where there are tough requirements for durability and hygiene such as in public toilets, sports centres, restaurants and public institutions. The V220 Sediment Traps and V55 Plaster Separators are designed to stop the deposition of substances such as plaster and sand, and are therefore frequently used in Universities and Art Schools. Purus' stainless steel interiors range includes kitchen worktops, sinks, workbenches and more; all featuring premium style, function and quality. The full range is available to browse at [www.purusgroup.com](http://www.purusgroup.com).

## V220 Sediment Traps and V55 Plaster Separators

The V220 and V55 are frequently used by art schools, colleges and universities.



**V220 Sediment Trap**  
Product code: 7647019  
Price: £447.09



**V55 Plaster Separator**  
Product code: 8037905  
Price: £1,070.40

## Stainless steel sinks, urinals and toilets

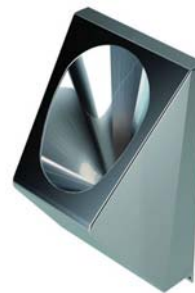
The full range is available to view at [www.purusgroup.com](http://www.purusgroup.com).



**V214 Sink**  
Product code: 7631214



**V301 Niagara Urinal trough**  
Lengths from 1200mm to 2400mm



**V345 Urinal**  
Product code: 7991051



**V130 WC**  
Product code: 7969018

Purus have recently launched their range of premium Stainless Steel Kitchen Worktops. All Kitchen Worktops are made to order, and have exceptional style, function and quality.

They are available in lengths between 600mm and 3400mm, in a range of widths, thicknesses and shapes. There are many designs of sink available to specify with the worktops, also in a variety of sizes and with a range of edge styles, and these can be combined to create different overall dimensions.



Purus Ltd.  
Suite 6, Arena Park, Tarn Lane,  
Scarcroft, Leeds LS17 9BF

Tel: +44 (0) 113 289 3172  
+44 (0) 844 800 1651  
Fax: +44 (0) 113 289 3778

info@purusgroup.com  
www.purusgroup.com



# PURUS

Our ongoing product development may entail changes in version, design and construction, and we reserve the right to make such changes.



Tel: (01495) 767600 Fax: (01495) 767601 Email: sales@faucets.co.uk

Prices are excluding VAT